

# RasterLink6

## Sophisticated RIP Software maximizes the performance of JFX200-2513

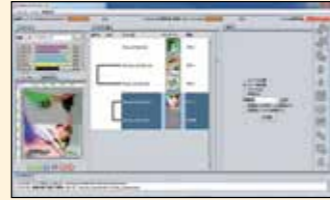
### Intuitive and user-friendly operation



1. Easy to follow icons enable intuitive and user-friendly operation



2. Related settings feature in one window to simplify RIP operations with 'Register as Favourite' option available for regularly used layouts



3. Printing progress can be monitored on the main screen

#### Web update function is supported:

This facility enables easy program updates and profile downloading to be performed via the internet.

### Specifications

Item	JFX200-2513	
Head	Staggered array of 2 heads	
Print resolution	300, 450, 600, 900, 1,200dpi	
Ink	Type	UV curable ink: LUS-150 (C, M, Y, K, W) UV curable ink: LH-100 (C, M, Y, K, W, Cl)
	Ink supply system	Supplied from 1-litre bottles for each colour
	Ink circulation system <sup>1</sup>	White ink circulation using Mimaki Circulation Technology (MCT)
	Maximum media size	2,500 x 1,300mm
Media	Dimensions (WxD)	2,500 x 1,300mm
	Height	50mm
	Weight	50 kg/m <sup>2</sup> non concentrated load
Media absorption	Absorption fixed through use of a vacuum	
Range accuracy	Number of vacuum zones	2 partitions (X-axis direction)
	Absolute accuracy	±0.3mm or ±0.3% of the specified range, whichever is larger
UV device	Reproducibility	±0.2mm or ±0.1% of the specified range, whichever is larger
	Standard service life <sup>2</sup>	Over 5,000 hours
Interface	LED-UV system USB2.0	
Safety standard	VCCI class A, CE Marking, CB Report, UL (U.S. safety organization), RoHS directive, UL 60950-1, FCC class A	
Power supply specifications	Single phase, 200 V AC-240 V AC, 50Hz/60Hz, up to 12A	
Power consumption	Up to 2.88kVA	
Installation environment	Temperature	15°C-30°C
	Relative humidity	35%-65% RH
	Accuracy maintained temperature	18°C-25°C
	Temperature gradient	Up to ±10°C/h
Dimensions (WxDxH)	Dust	Similar to standard office environments
	Weight	4,400x2,250x1,250mm 650kg

<sup>1</sup> MCT works only with white ink.  
<sup>2</sup> The standard service life times listed are estimates and do not guarantee the operation.

### Supplies

Item	Colour	Item No.	Remarks
LUS-150	Cyan	LUS15-C-BA	Volume per bottle: 1 Litre
	Magenta	LUS15-M-BA	
	Yellow	LUS15-Y-BA	
	Black	LUS15-K-BA	
	White	LUS15-W-BA	
LH-100	Cyan	LH100-C-BA	
	Magenta	LH100-M-BA	
	Yellow	LH100-Y-BA	
	Black	LH100-K-BA	
	White	LH100-W-BA	
	Clear	LH100-CL-BA	
	Tungsten replacement needle for ionizer	SPA-0208	4 pcs
	Air filter kit	SPA-0209	10 sets

- Ink and inkjet primer are sold in 1 Litre bottles.
- LUS-150 inks can be used in combination with LH-100 Clear ink.
- The amount of flexibility exhibited by LUS-150 ink may differ depending on the texture of the print media used.
- Try out the ink on a test page before proceeding with a full print job.
- Printing with LH-100 may not allow the full speed capabilities of the printer to be utilized.

### Options

Item	Item No.	Remarks
Ionizer kit	OPT-J0342	Static eliminator kit
Vacuum unit (φ 1mm x 200mm)	OPT-J0217	Single-phase, 200V-240V, 30A, 1.9kW
Optional blower connector kit	OPT-J0330	

- If the vacuum unit that comes supplied with the printer does not have enough suction power, please purchase a different vacuum unit with optional settings.
- The optional blower connector kit (OPT-J0330) sold separately is needed to connect a vacuum unit with optional settings to the JFX200-2513.
- Vacuum units also require their own power supply line separate from that for the printer itself.

### ⚠ Inks and substrates:

- Please note that properties and adhesion, weather resistance etc. of ink and substrates can vary. Therefore please test materials before printing.
- Some substrates require primer before printing. Please test materials beforehand or ask your sales representative.

### ⚠ Safety notice:

- You are dealing with UV light sources that may harm your health. Please follow below guidelines strictly:
- Do not look directly into the UV light source nor place your hand, or expose your skin directly to the UV light source.
  - Depending upon print mode, there might occur some VOC emittance from printed parts not yet cured and hardened
  - In addition, please read the instructions and guidelines of the manual carefully and follow those.

• Some of the samples in this folder are artificial renderings • Specifications, design and dimensions stated in this folder may be subject to change without notice (for technical improvements, etc.)  
• The corporate and merchandise names written on this folder are the trademark of the respective corporations • Inkjet printers print using extreme fine dots, so colours may vary after replacement of the printing heads, also note that if using multiple printer units, colours could vary slightly from one unit to other unit due to slight individual differences • Composer's errors reserved

# JFX200-2513



## Affordable, production UV LED printer...

# Mimaki

www.mimakieurope.com info@mimakieurope.com @MimakiEurope

Mimaki Europe B.V. Stammerdijk 7E, 1112 AA Diemen, The Netherlands Tel: +31 (0)20 4627640



INDUSTRIAL PRODUCTS



eco

# Mimaki

The world imagines... Mimaki delivers



the power to

create...



## Affordable, high-performance flatbed UV LED printer

The latest addition to Mimaki's family of UV LED flatbed printers, the JFX200-2513 delivers unparalleled results to expand the potential for professional sign and graphics companies. A choice of inks, including white and clear, offers unlimited creative opportunities, with the capability to print to a wide range of substrates. Easy to use and with a compact footprint, the JFX200-2513 maximizes productivity by using industry standard-sized media, on its 2.5m x 1.3m bed.

### JFX200-2513 delivers ...

- Highly productive print speeds up to 25m<sup>2</sup>/h and 12.5m<sup>2</sup>/h with simultaneous white ink printing
- Maximum print area of 2.5m x 1.3m
- Newly developed ink supply unit, speeding up ink replacement process
- Mimaki Advance Pass System reducing bandings
- Layout pins simplifying the process of aligning media
- Mimaki Circulation Technology preventing pigment sedimentation of white ink
- Two layer printing with white ink to clear and coloured substrates
- Vacuum unit and high performance Rasterlink RIP software as standard

UV LED CURABLE
25m <sup>2</sup> /h MAX. PRINT SPEED
2,500mm x 1,300mm MAX. PRINT AREA
1,200dpi MAX. RESOLUTION
50mm MAX. MEDIA THICKNESS
FLEXIBLE/HARD INK OPTIONS
4 COLOURS + WHITE + CLEAR

JFX200-2513



#### ENGINEERING EXCELLENCE AND CREATIVE INNOVATION

Founded in Japan in 1975, Mimaki Engineering has steadily grown by reputation and influence into a global company with large operational bases in Asia and the Pacific, United States and Europe.

Renowned for award-winning performance, peerless build quality and innovative technology, Mimaki has established itself as a leading manufacturer of wide-format inkjet printers and cutting machines for the sign and graphics, textile and apparel and industrial markets. In addition, Mimaki also provides a comprehensive range of supporting products; hardware, software and associated consumable items, such as inks and cutting blades.

From outdoor signage and billboards to interior decoration and furnishing, from packaging and labels to promotional gifts and apparel, Mimaki is committed to developing technology that sets new industry standards, producing machines and products that turn the imagination of our customers into breath-taking reality.

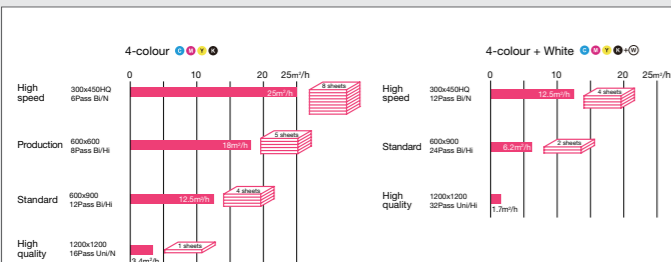
... Mimaki delivers

**Create ...** Large format signage & graphics, including back-lit, retail PoS exhibition graphics, interior decor panels, creative displays and much more...

### KEY TECHNICAL FEATURES ...

#### High Productivity and Print Speed

Print up to 8 sheets of 8ft x 4ft (2,440 x 1,220mm) media per hour



#### New Ink Supply Unit

1 Litre bottles of ink can be easily inserted from the front of the printer, speeding up the replacement process



#### Easy operation: Layout pins eliminate alignment problems

The machine is equipped with pins and a scale to ensure accurate substrate alignment on the flatbed. By fixing the substrate to the pins, checking the placement against the scale and then editing the design data or printer setting accordingly, all alignment problems are eliminated



#### Direct-to-media printing even on to thick media

Images can be printed directly onto rigid media up to 50mm thick, providing great versatility and a wider range of potential applications.

